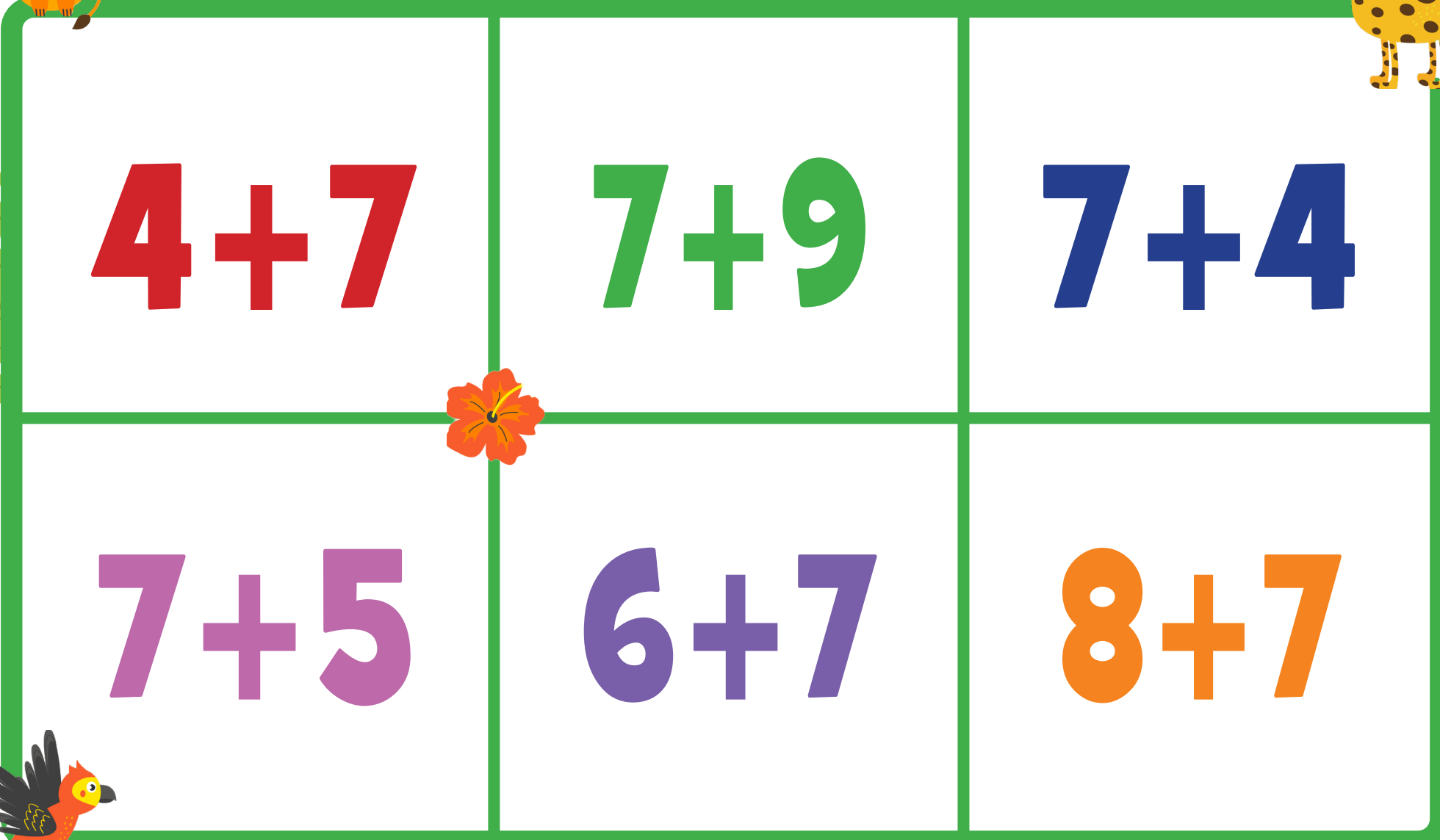


BRIDGE 7 BINGO

 $4+7$

$7+9$

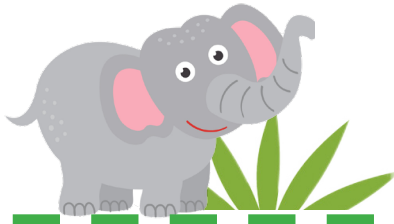
$7+4$

$7+5$

$6+7$

$8+7$

CALLING CARDS



11

16

14

12

13

15



BRIDGE 7 BINGO

 $7+8$

$7+9$

$7+7$

$5+7$

$8+7$

$9+7$

CALLING CARDS



15

16

14



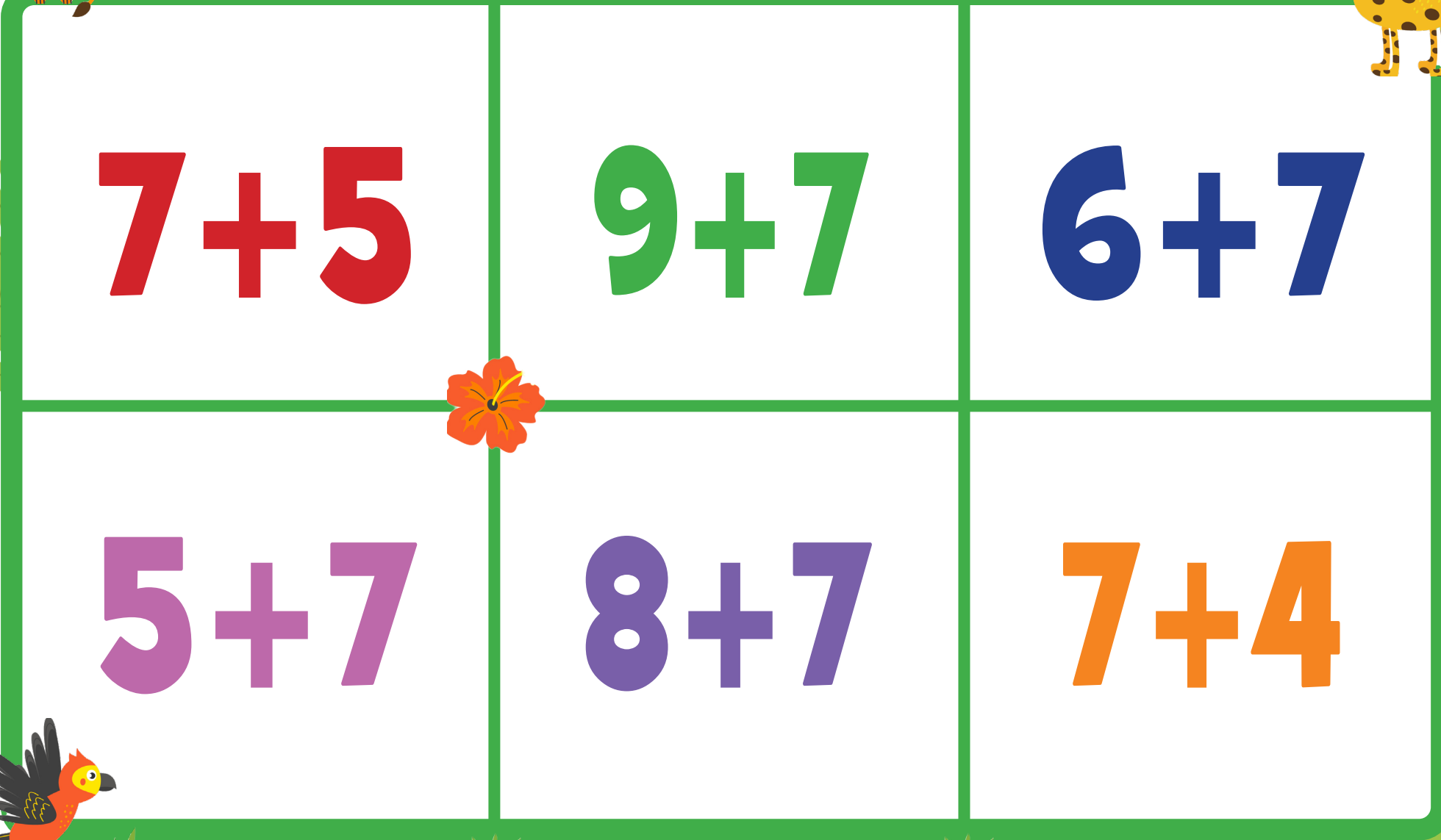
12

15

16



BRIDGE 7 BINGO

 $7+5$

$9+7$

$6+7$

$5+7$

$8+7$

$7+4$

CALLING CARDS



12

16

13



12

15

11



BRIDGE 7 BINGO

 $7 + 8$

$7 + 7$

$6 + 7$

$7 + 6$

$7 + 9$

$9 + 7$

CALLING CARDS



15

14

13



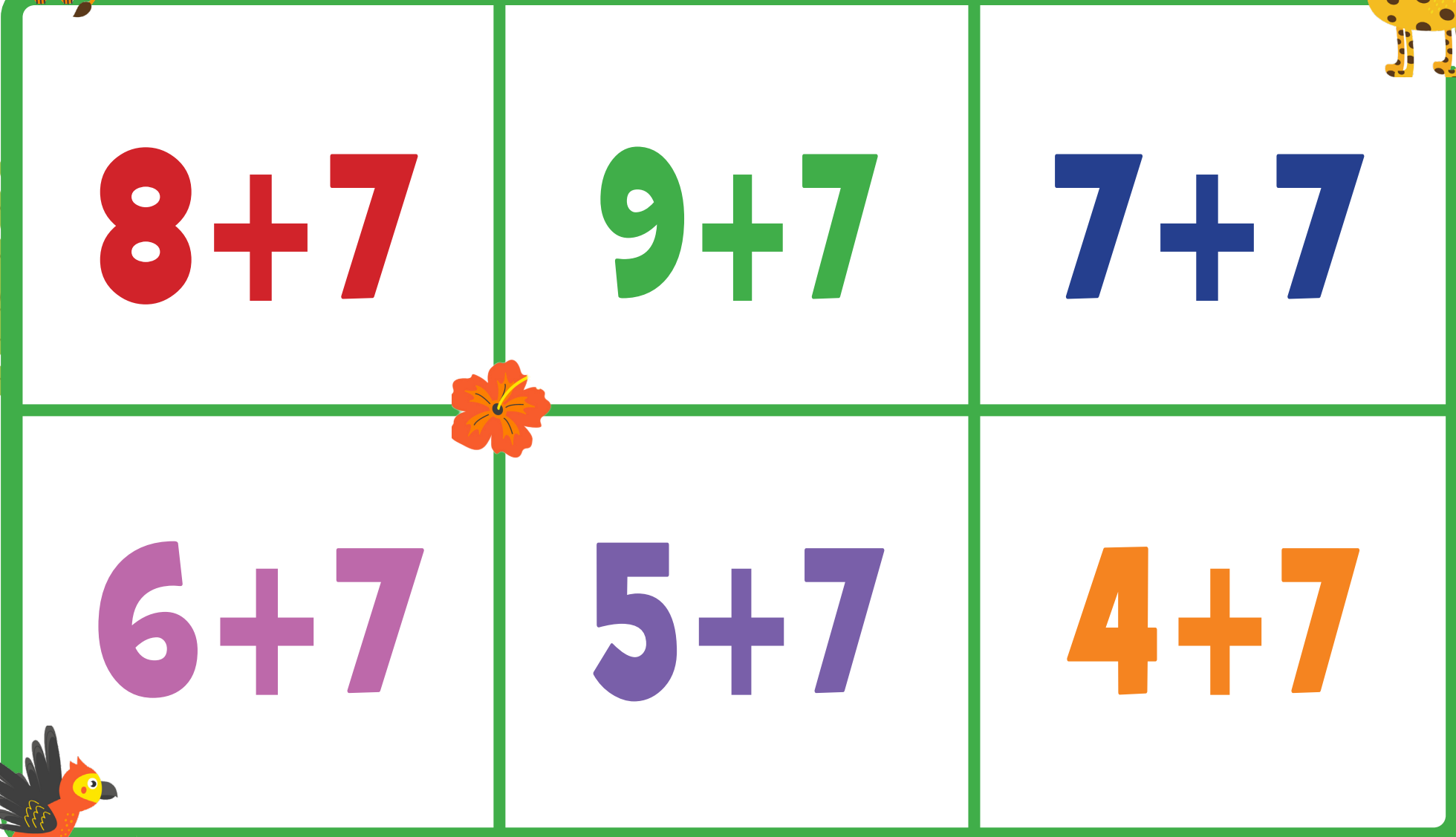
13

16

16



BRIDGE 7 BINGO

 $8+7$

$9+7$

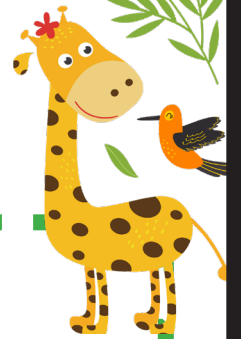
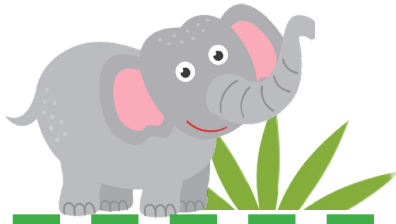
$7+7$

$6+7$

$5+7$

$4+7$

CALLING CARDS



15

16

14



13

12

11

