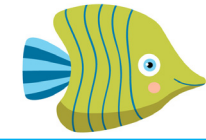


BRIDGE 8 BINGO



$$8 + 3$$

$$5 + 8$$

$$9 + 8$$

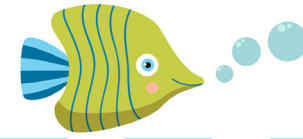
$$8 + 4$$

$$8 + 7$$

$$6 + 8$$



CALLING CARDS



11

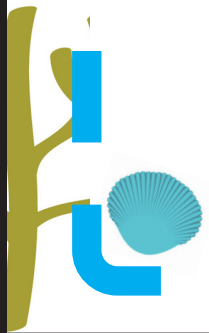
13

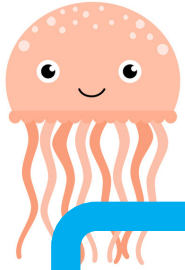
17

12

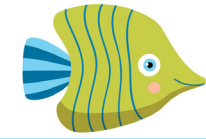
15

14





BRIDGE 8 BINGO



$$8 + 4$$

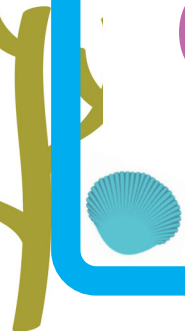
$$7 + 8$$

$$6 + 8$$

$$8 + 5$$

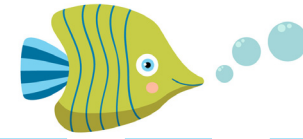
$$8 + 9$$

$$8 + 9$$





CALLING CARDS



12

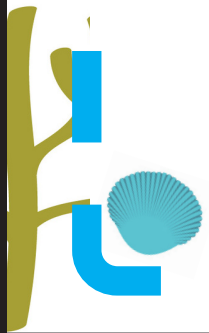
15

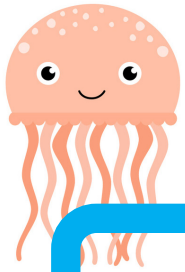
14

13

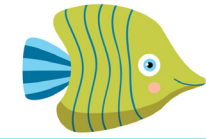
17

17





BRIDGE 8 BINGO



$6 + 8$

$5 + 8$

$7 + 8$

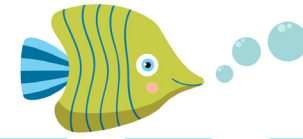
$8 + 8$

$8 + 6$

$8 + 5$



CALLING CARDS



14

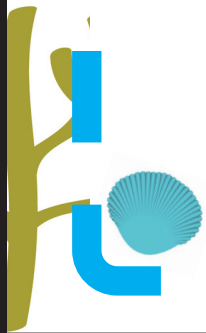
13

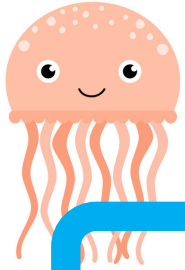
15

16

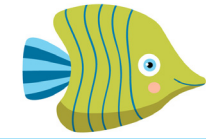
14

13





BRIDGE 8 BINGO



$$3 + 8$$

$$9 + 8$$

$$8 + 8$$

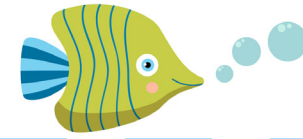
$$6 + 8$$

$$8 + 4$$

$$8 + 8$$



CALLING CARDS



11

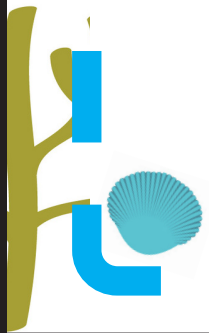
17

16

12

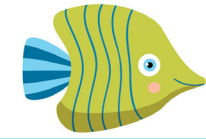
12

16





BRIDGE 8 BINGO



$$9 + 8$$

$$7 + 8$$

$$3 + 8$$

$$8 + 3$$

$$8 + 8$$

$$8 + 7$$



CALLING CARDS



17

15

11

11

16

15

