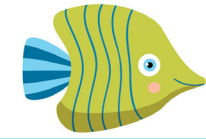


# BRIDGE 9 BINGO



$$6 + 9$$

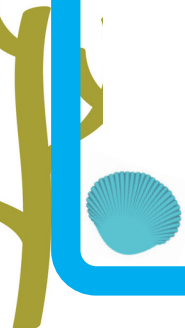
$$9 + 7$$

$$7 + 9$$

$$9 + 6$$

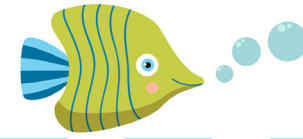
$$8 + 9$$

$$9 + 5$$





# CALLING CARDS



15

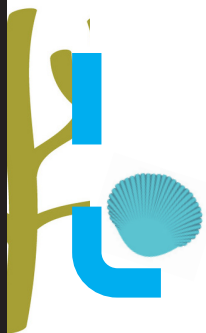
16

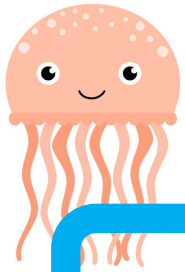
16

15

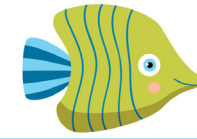
17

14





# BRIDGE 9 BINGO



$$9 + 9$$

$$9 + 2$$

$$4 + 9$$

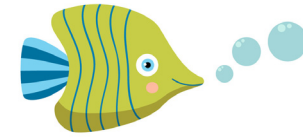
$$3 + 9$$

$$9 + 6$$

$$9 + 3$$



# CALLING CARDS



18

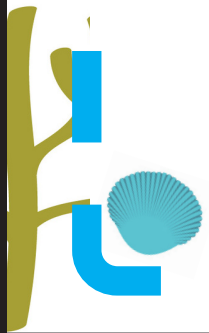
11

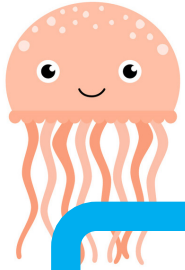
13

12

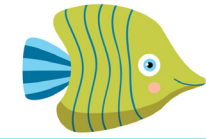
15

12





# BRIDGE 9 BINGO



$$9 + 4$$

$$9 + 8$$

$$9 + 9$$

$$8 + 9$$

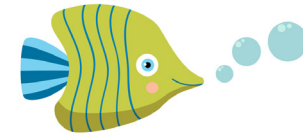
$$2 + 9$$

$$9 + 5$$





# CALLING CARDS



13

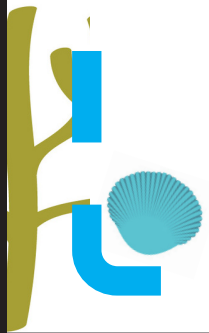
17

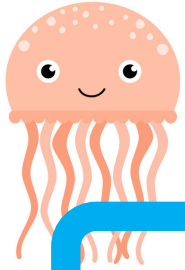
18

17

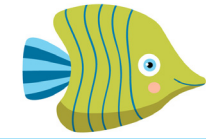
11

14





# BRIDGE 9 BINGO



$$2 + 9$$

$$9 + 4$$

$$9 + 5$$

$$9 + 7$$

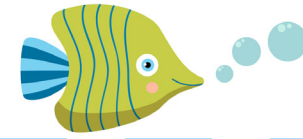
$$9 + 8$$

$$9 + 6$$





# CALLING CARDS



11

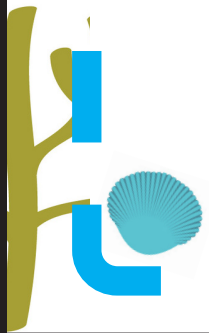
13

14

16

17

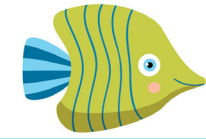
15







# BRIDGE 9 BINGO



$$4 + 9$$

$$9 + 2$$

$$3 + 9$$

$$9 + 4$$

$$5 + 9$$

$$9 + 6$$





# CALLING CARDS



13

11

12

13

14

15

