

BRIDGE 9 BINGO

$9+7$

$9+2$

$8+9$

$9+3$

$9+9$

$9+4$

CALLING CARDS



16

11

17



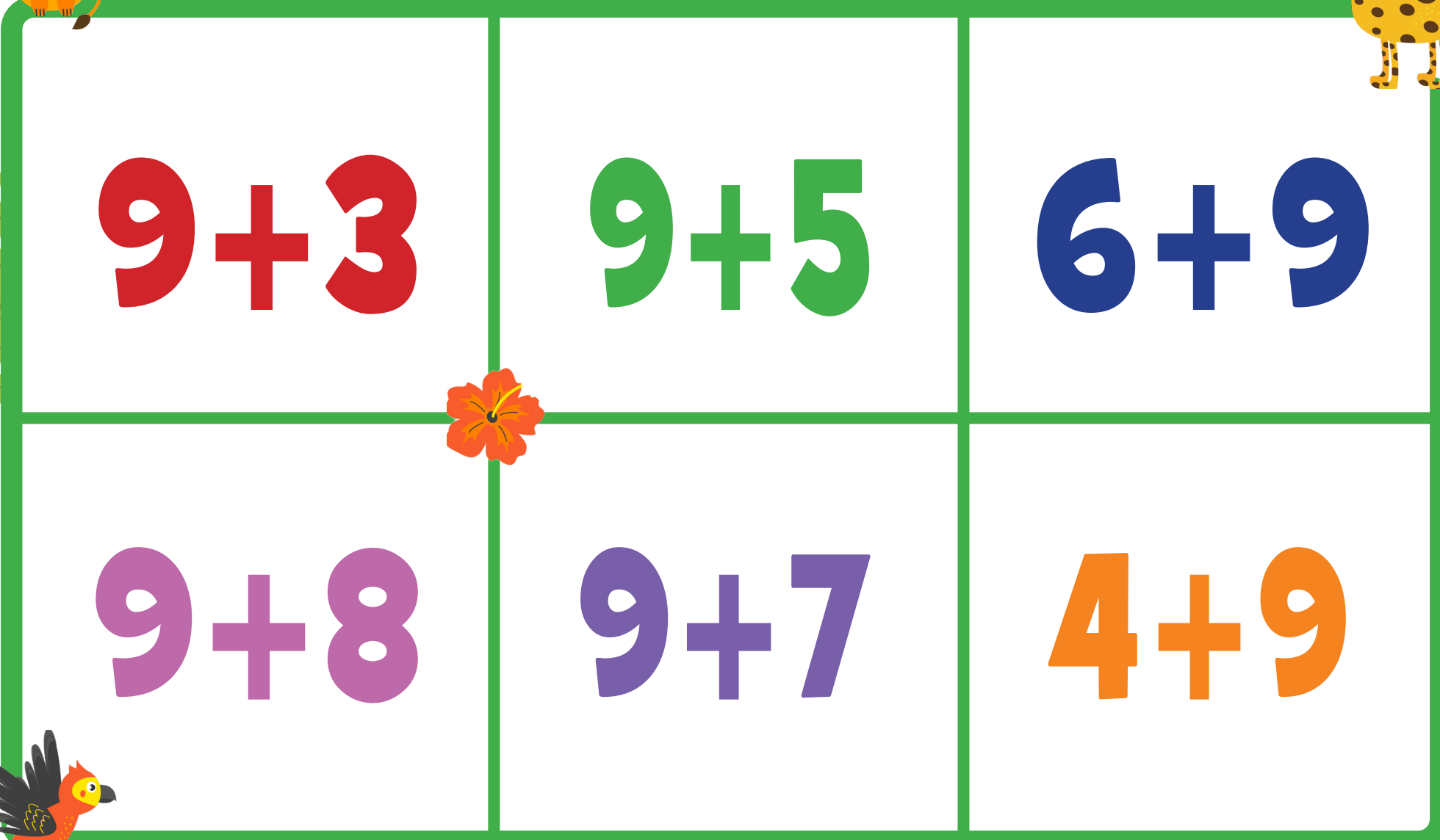
12

18

13



BRIDGE 9 BINGO

 $9+3$

$9+5$

$6+9$

$9+8$

$9+7$

$4+9$

CALLING CARDS



12

14

15



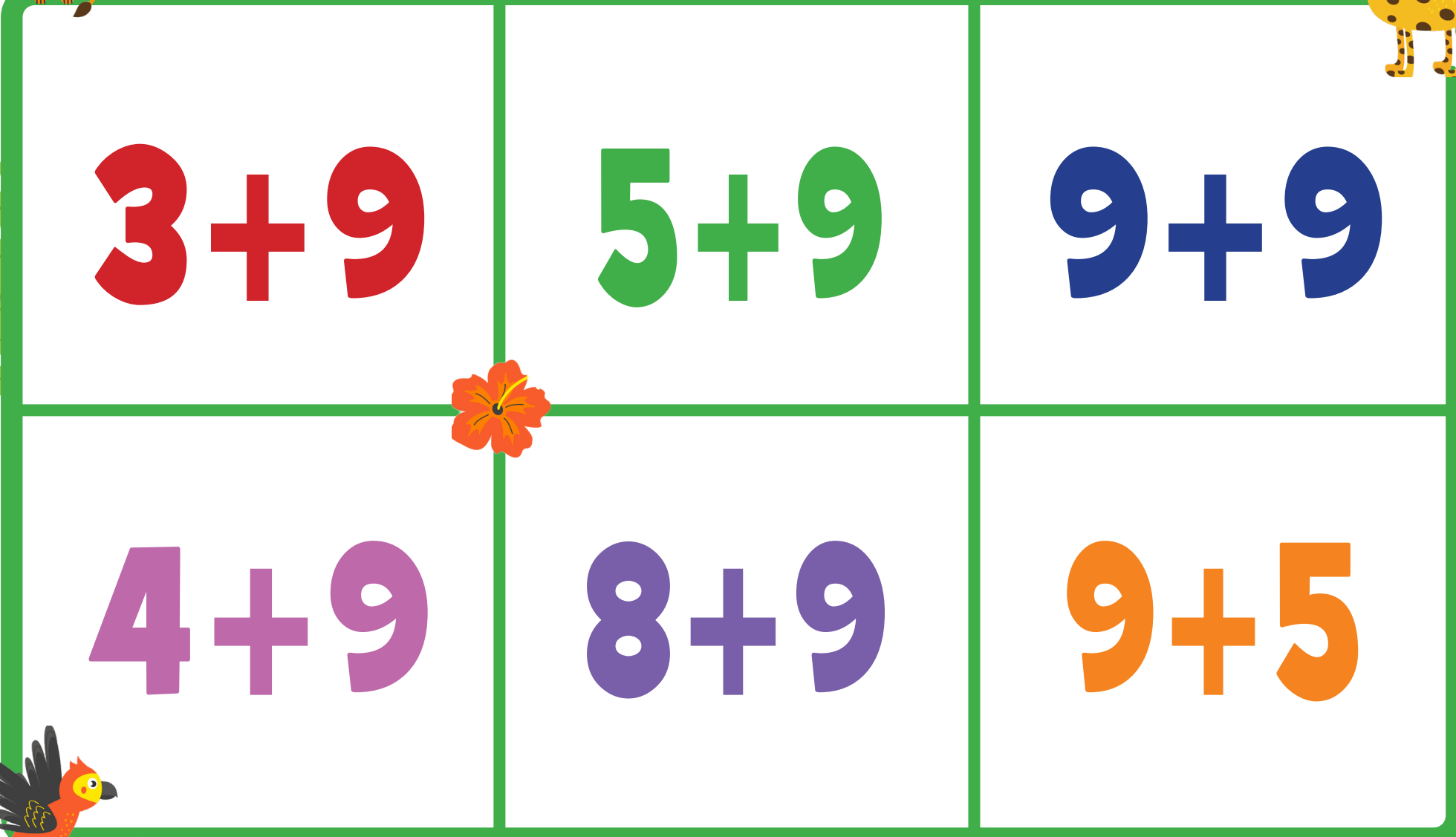
17

16

13



BRIDGE 9 BINGO

 $3 + 9$

$5 + 9$

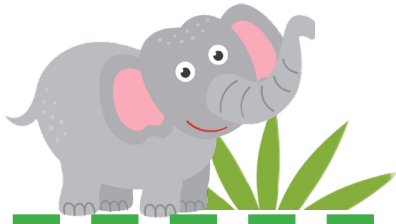
$9 + 9$

$4 + 9$

$8 + 9$

$9 + 5$

CALLING CARDS



12

14

18



13

17

14



BRIDGE 9 BINGO

$3 + 7$

$9 + 5$

$9 + 6$

$6 + 9$

$2 + 9$

$4 + 9$

CALLING CARDS



10

14

15



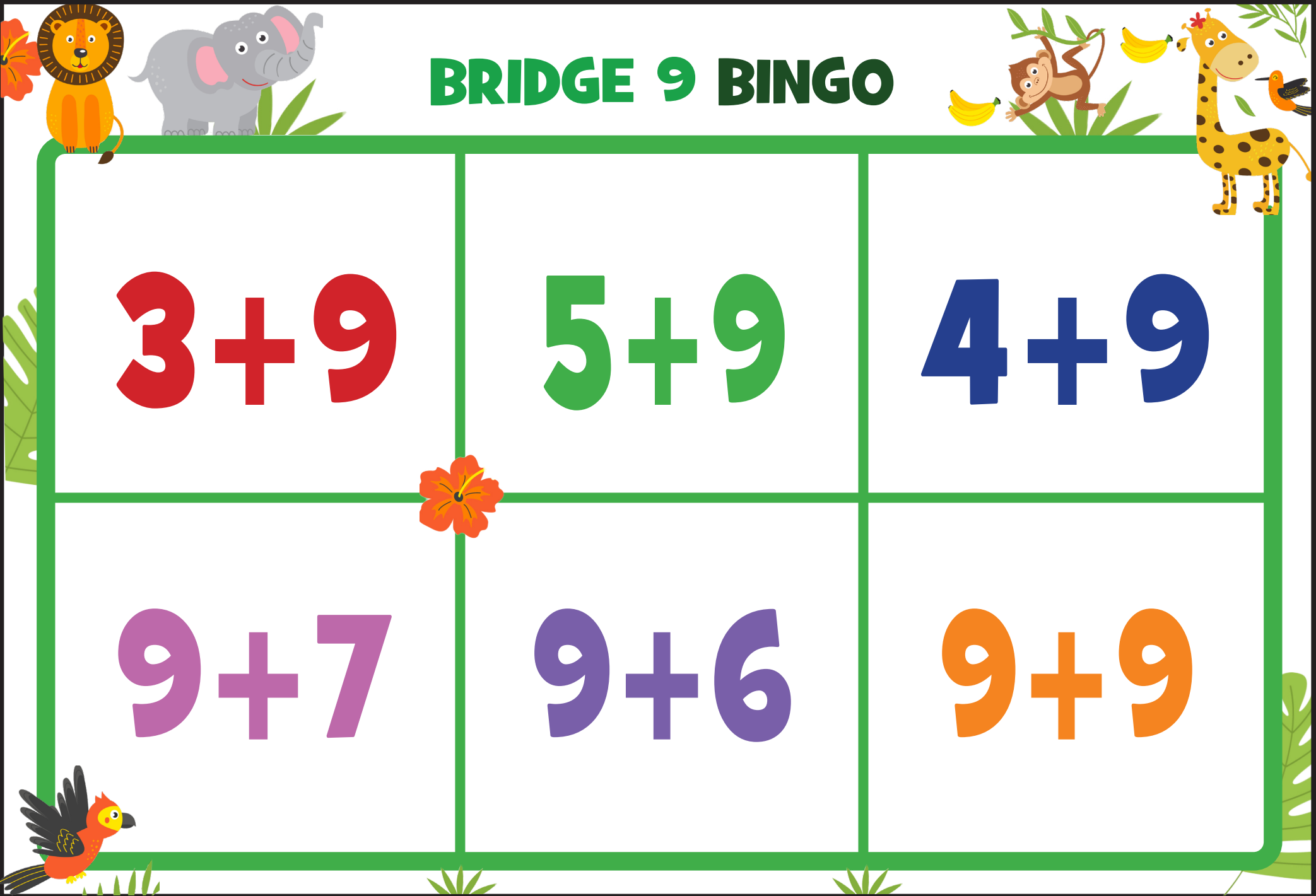
15

11

13



BRIDGE 9 BINGO

 $3 + 9$

$5 + 9$

$4 + 9$

$9 + 7$

$9 + 6$

$9 + 9$

CALLING CARDS



12

14

13



16

15

18

