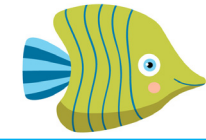


BRIDGING 10 BINGO



$$9 + 9$$

$$6 + 8$$

$$7 + 9$$

$$9 + 2$$

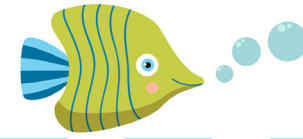
$$8 + 9$$

$$6 + 7$$





CALLING CARDS



18

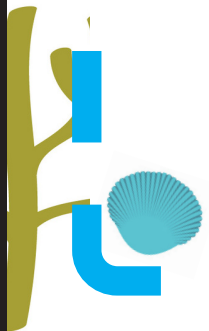
14

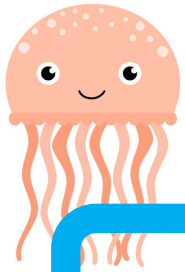
16

11

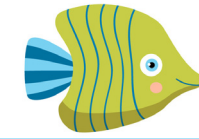
17

13





BRIDGING 10 BINGO



$$9 + 5$$

$$9 + 7$$

$$8 + 3$$

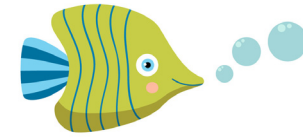
$$5 + 7$$

$$8 + 6$$

$$7 + 7$$



CALLING CARDS



14

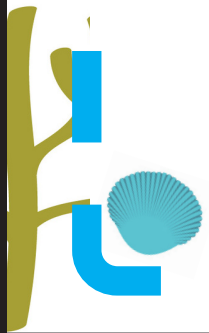
16

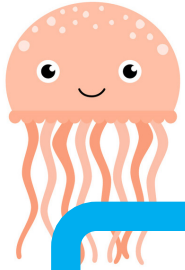
11

12

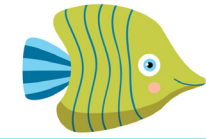
14

14





BRIDGING 10 BINGO



$5 + 6$

$7 + 8$

$7 + 6$

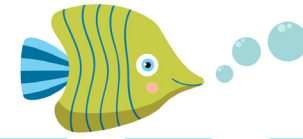
$6 + 9$

$9 + 9$

$8 + 8$



CALLING CARDS



11

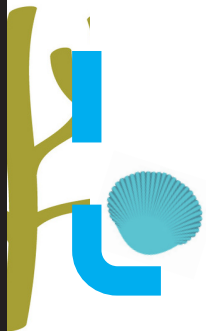
15

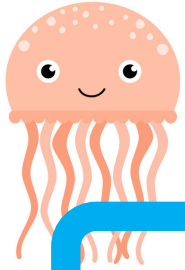
13

15

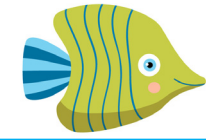
18

16





BRIDGING 10 BINGO



$$7 + 6$$

$$7 + 7$$

$$6 + 6$$

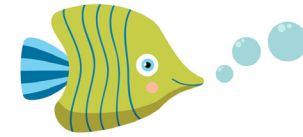
$$6 + 5$$

$$9 + 8$$

$$8 + 8$$



CALLING CARDS



13

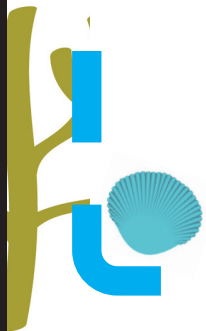
14

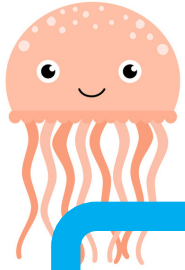
12

11

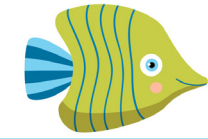
17

16





BRIDGING 10 BINGO



$$6 + 6$$

$$8 + 5$$

$$6 + 8$$

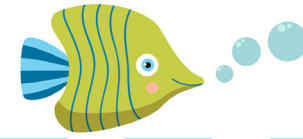
$$8 + 4$$

$$7 + 8$$

$$9 + 9$$



CALLING CARDS



12

13

14

12

15

18

