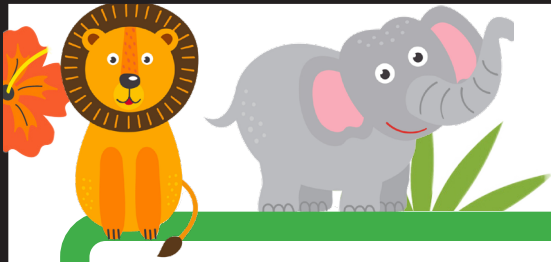


BRIDGING 10 BINGO



$11 - 9$

$13 - 6$

$11 - 6$

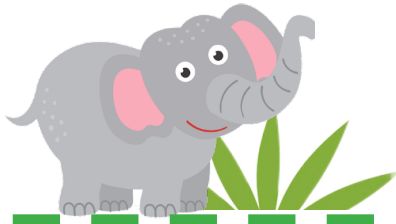
$17 - 8$

$15 - 9$

$14 - 6$



CALLING CARDS



2

7

5



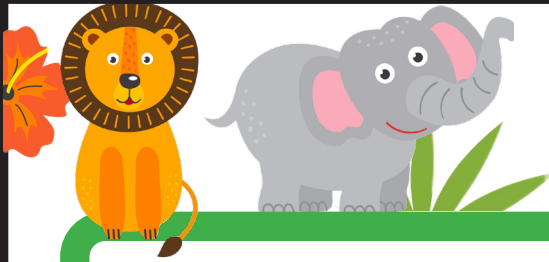
9

6

8



BRIDGING 10 BINGO



$17 - 9$

$17 - 8$

$16 - 8$



$16 - 9$

$16 - 7$

$15 - 9$



CALLING CARDS



8

9

8



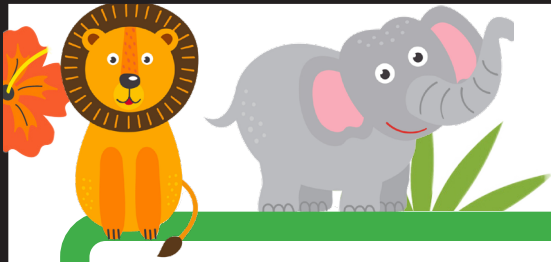
7

9

6



BRIDGING 10 BINGO



$15 - 8$

$15 - 7$

$13 - 9$



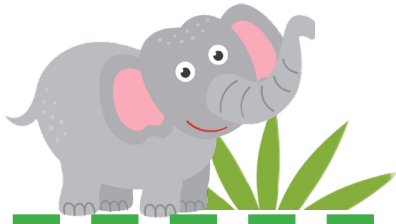
$13 - 4$

$12 - 9$

$12 - 8$



CALLING CARDS



7

8

4



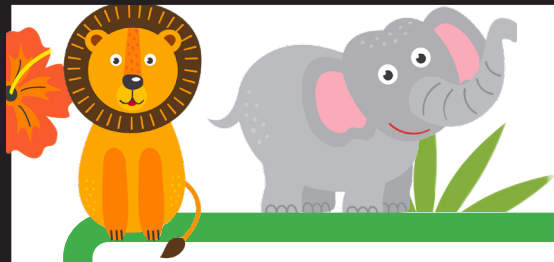
9

3

4



BRIDGING 10 BINGO



$12 - 9$

$12 - 6$

$12 - 8$

$11 - 8$

$11 - 9$

$11 - 6$



CALLING CARDS



3

6

4



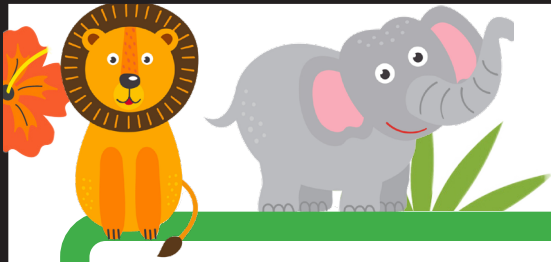
3

2

5



BRIDGING 10 BINGO



$13 - 5$

$15 - 6$

$11 - 3$

$12 - 4$

$13 - 9$

$11 - 6$



CALLING CARDS



8

9

8



8

4

5

