

DIVIDING BY 2 BINGO

$12 \div 2$

$10 \div 2$

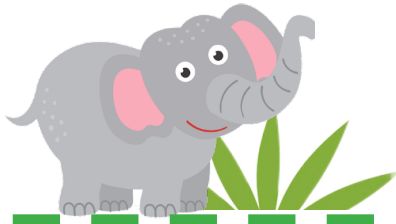
$8 \div 2$

$14 \div 2$

$6 \div 2$

$2 \div 2$

CALLING CARDS



6

5

4



7

3

1



DIVIDING BY 2 BINGO

$10 \div 2$

$20 \div 2$

$6 \div 2$

$12 \div 2$

$18 \div 2$

$2 \div 2$

CALLING CARDS



5

10

3



6

9

1



DIVIDING BY 2 BINGO

$14 \div 2 = 7$

$16 \div 2 = 8$

$8 \div 2 = 4$

$18 \div 2 = 9$

$4 \div 2 = 2$

$6 \div 2 = 3$

CALLING CARDS



7

8

4



9

2

3



DIVIDING BY 2 BINGO

$20 \div 2$

$14 \div 2$

$8 \div 2$

$16 \div 2$

$2 \div 2$

$12 \div 2$

CALLING CARDS



10

6

4



8

1

6



DIVIDING BY 2 BINGO

$18 \div 2$

$2 \div 2$

$8 \div 2$

$20 \div 2$

$4 \div 2$

$16 \div 2$

CALLING CARDS



9

1

4



10

2

8

