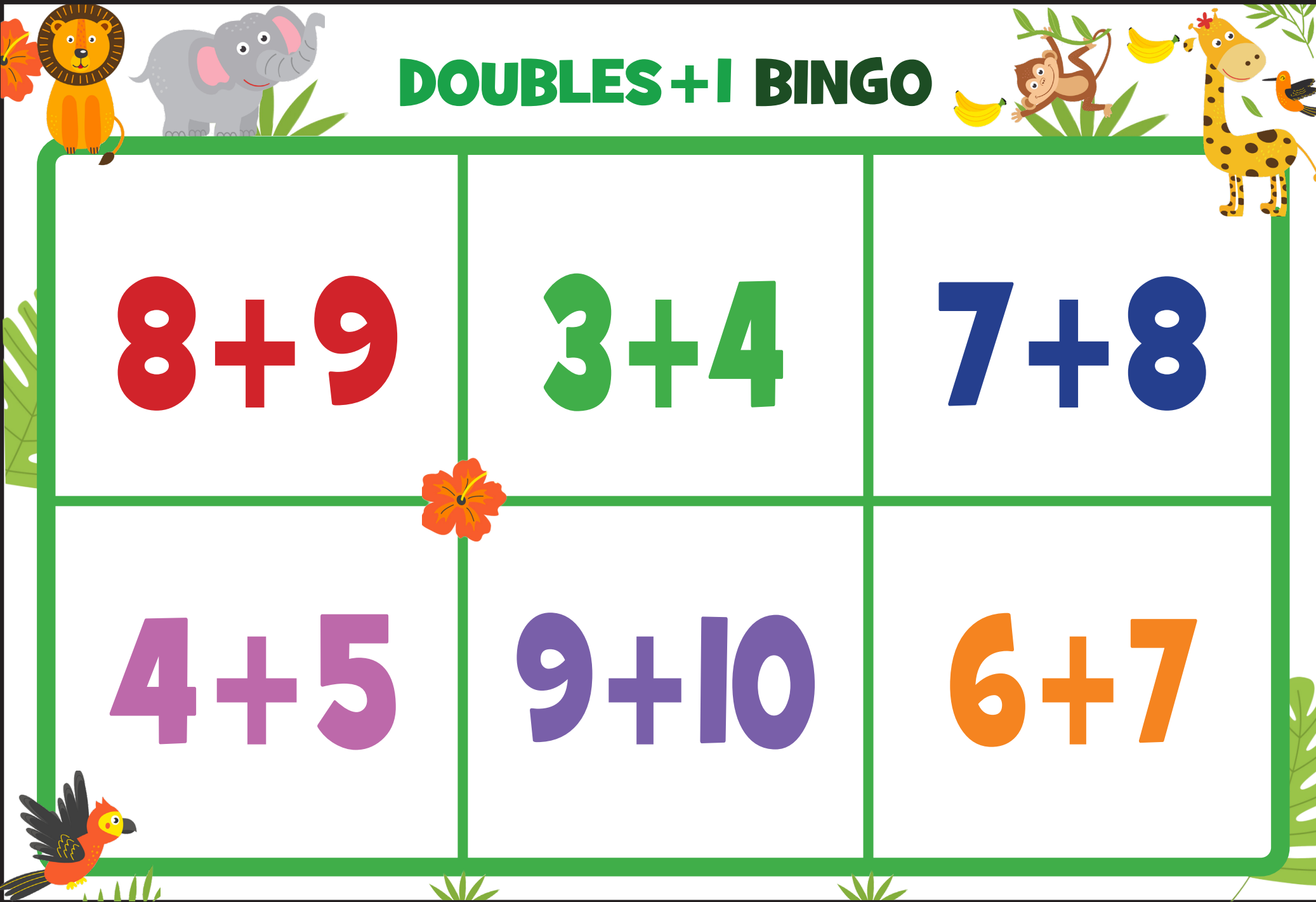


DOUBLES + 1 BINGO



$8 + 9$

$3 + 4$

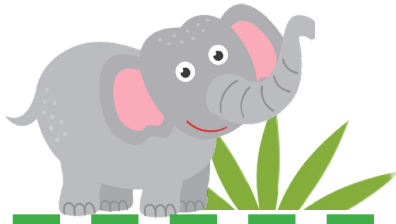
$7 + 8$

$4 + 5$

$9 + 10$

$6 + 7$

CALLING CARDS



17

7

15



9

19

13



DOUBLES + 1 BINGO

$5 + 6$

$1 + 2$

$6 + 7$

$8 + 9$

$4 + 5$

$3 + 4$

CALLING CARDS



11

3

13



17

9

7



DOUBLES + 1 BINGO

$9 + 10$

$6 + 7$

$4 + 5$

$2 + 1$

$5 + 6$

$8 + 9$

CALLING CARDS



19

13

9



3

11

17



DOUBLES + 1 BINGO

$7 + 8$

$6 + 7$

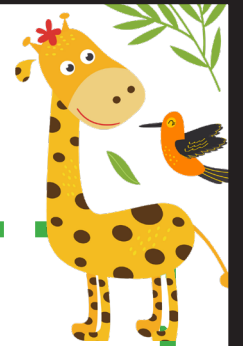
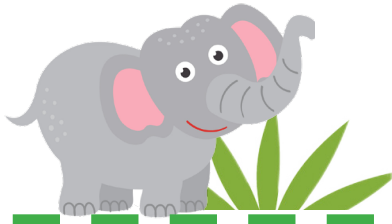
$3 + 4$

$2 + 3$

$8 + 9$

$5 + 6$

CALLING CARDS



15

13

7



5

17

11



DOUBLES + 1 BINGO

 $6 + 7$

$2 + 3$

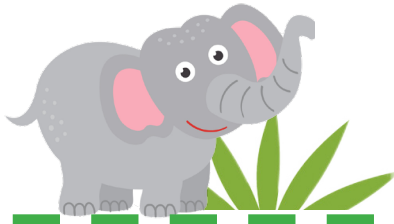
$1 + 2$

$4 + 5$

$7 + 8$

$8 + 9$

CALLING CARDS



13

5

3



9

15

17

