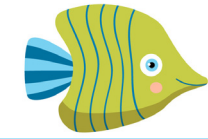


DOUBLES BINGO



$10 + 10$

$3 + 3$

$7 + 7$

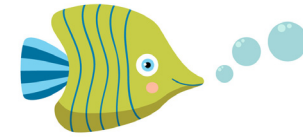
$4 + 4$

$5 + 5$

$4 + 4$



CALLING CARDS



20

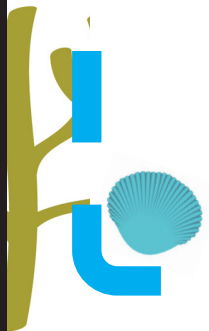
6

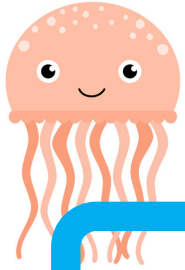
14

8

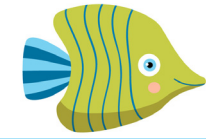
10

8





DOUBLES BINGO



$1 + 1$

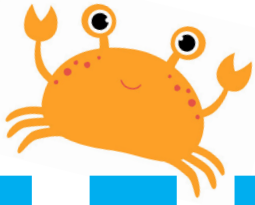
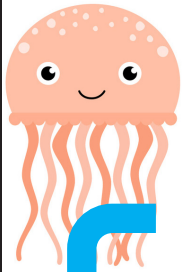
$7 + 7$

$4 + 4$

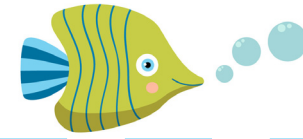
$2 + 2$

$8 + 8$

$3 + 3$



CALLING CARDS



2

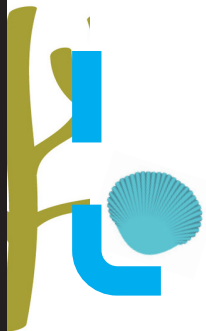
14

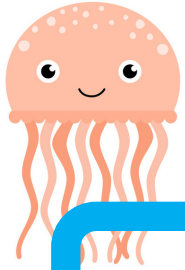
8

4

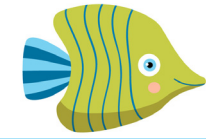
16

6





DOUBLES BINGO



$$3 + 3$$

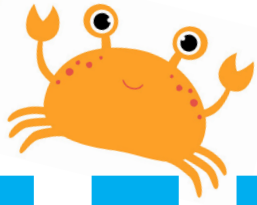
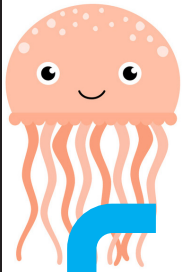
$$9 + 9$$

$$6 + 6$$

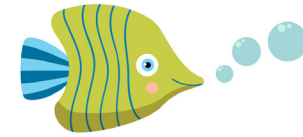
$$10 + 10$$

$$2 + 2$$

$$8 + 8$$



CALLING CARDS



6

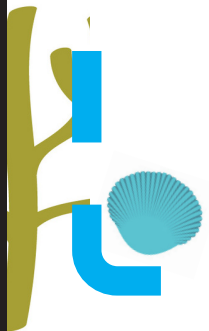
18

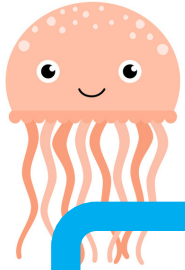
12

20

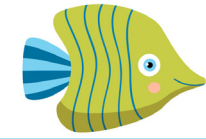
4

16





DOUBLES BINGO



$$2 + 2$$

$$5 + 5$$

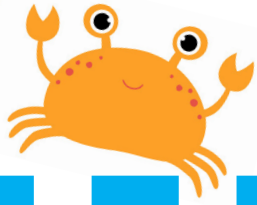
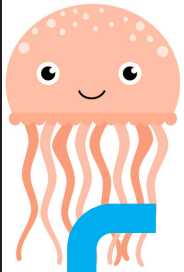
$$6 + 6$$

$$9 + 9$$

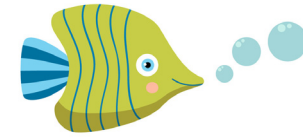
$$1 + 1$$

$$7 + 7$$





CALLING CARDS



4

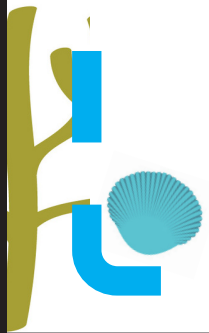
10

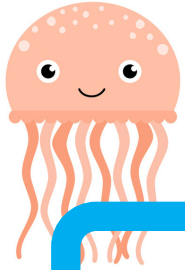
12

18

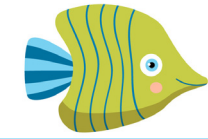
2

14





DOUBLES BINGO



$$6 + 6$$

$$1 + 1$$

$$9 + 9$$

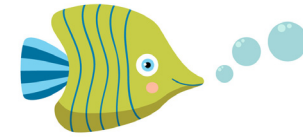
$$3 + 3$$

$$4 + 4$$

$$2 + 2$$



CALLING CARDS



12

2

18

6

8

4

