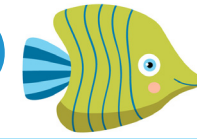


# LOWER DOUBLES BINGO



$1 + 1$

$3 + 3$

$5 + 5$

$4 + 4$

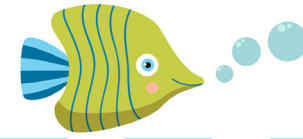
$2 + 2$

$4 + 4$





# CALLING CARDS



2

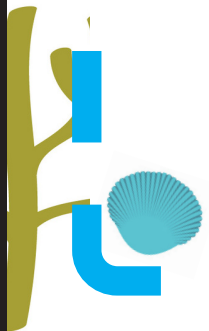
6

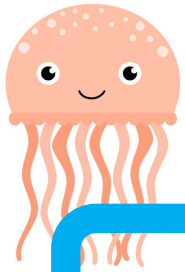
10

8

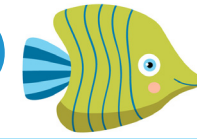
4

8





# LOWER DOUBLES BINGO



$$3 + 3$$

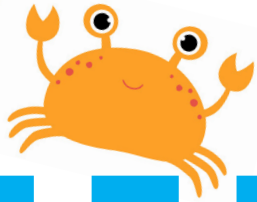
$$1 + 1$$

$$2 + 2$$

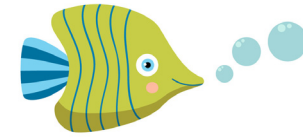
$$5 + 5$$

$$4 + 4$$

$$3 + 3$$



# CALLING CARDS



6

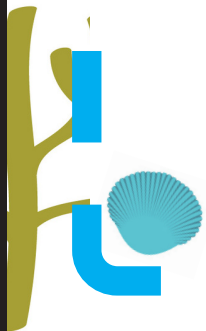
2

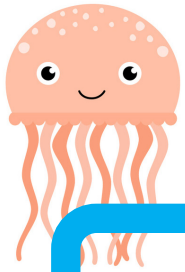
4

10

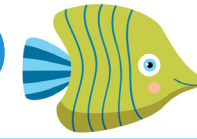
8

6





# LOWER DOUBLES BINGO



$$4 + 4$$

$$2 + 2$$

$$3 + 3$$

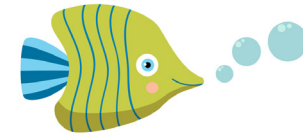
$$2 + 2$$

$$5 + 5$$

$$1 + 1$$



# CALLING CARDS



8

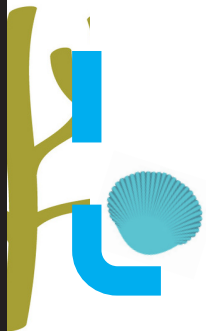
4

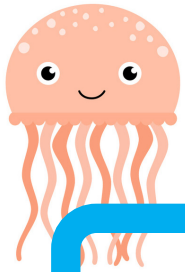
6

4

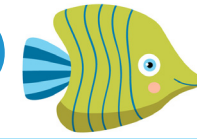
10

2





# LOWER DOUBLES BINGO



$$4 + 4$$

$$5 + 5$$

$$1 + 1$$

$$3 + 3$$

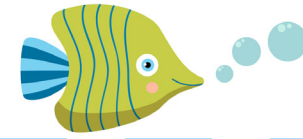
$$1 + 1$$

$$2 + 2$$





# CALLING CARDS



8

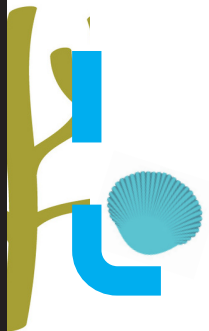
10

2

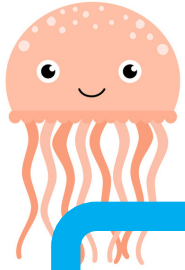
6

2

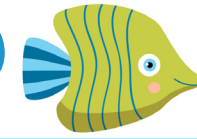
4







# LOWER DOUBLES BINGO



$$5 + 5$$

$$1 + 1$$

$$2 + 2$$

$$3 + 3$$

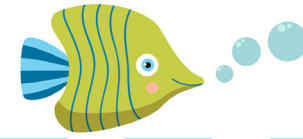
$$4 + 4$$

$$5 + 5$$





# CALLING CARDS



10

2

2

6

8

10

