

LOWER DOUBLES BINGO

$3 + 3$

$4 + 4$

$5 + 5$

$1 + 1$

$3 + 3$

$2 + 2$

CALLING CARDS



6

8

10



2

6

4



LOWER DOUBLES BINGO

$4 + 4$

$2 + 2$

$1 + 1$

$3 + 3$

$5 + 5$

$4 + 4$

CALLING CARDS



8

4

2



6

10

8



LOWER DOUBLES BINGO

$2 + 2$

$5 + 5$

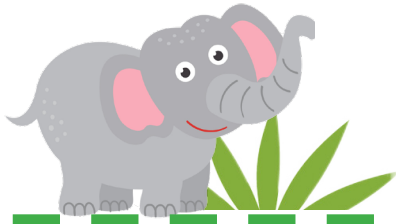
$4 + 4$

$3 + 3$

$1 + 1$

$1 + 1$

CALLING CARDS



4

10

8



6

2

2



LOWER DOUBLES BINGO

$4 + 4$

$3 + 3$

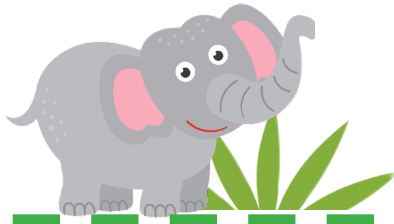
$5 + 5$

$4 + 4$

$1 + 1$

$2 + 2$

CALLING CARDS



8

6

10



8

2

4



LOWER DOUBLES BINGO

$1+1$

$2+2$

$3+3$

$4+4$

$3+3$

$5+5$

CALLING CARDS



2

4

6



8

6

10

