

# LOWER DOUBLES BINGO

 $5+5$

$2+2$

$1+1$

$4+4$

$3+3$

$5+5$

# CALLING CARDS

10

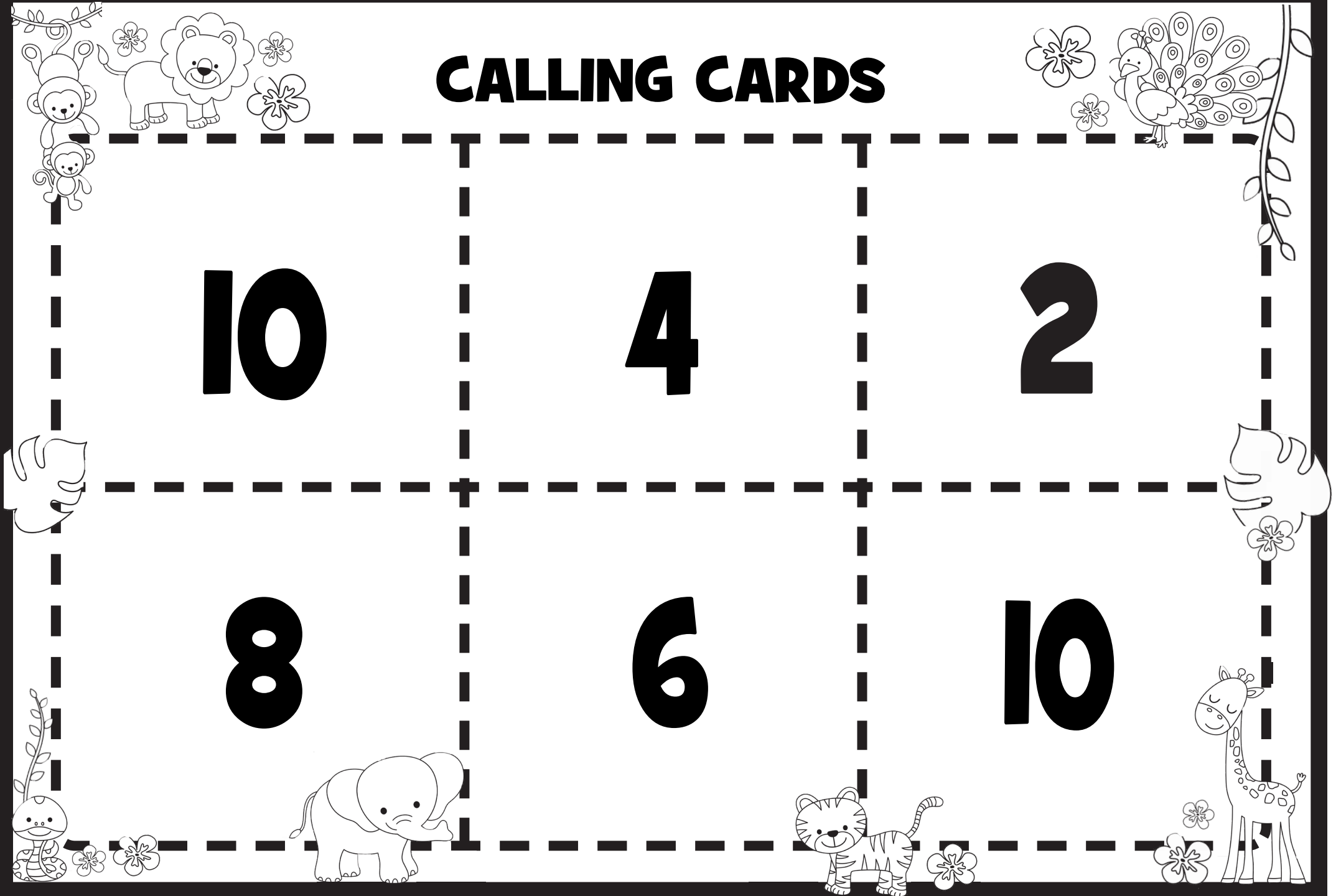
4

2

8

6

10



# LOWER DOUBLES BINGO

$1+1$

$5+5$

$5+5$

$3+3$

$4+4$

$2+2$

# CALLING CARDS

2

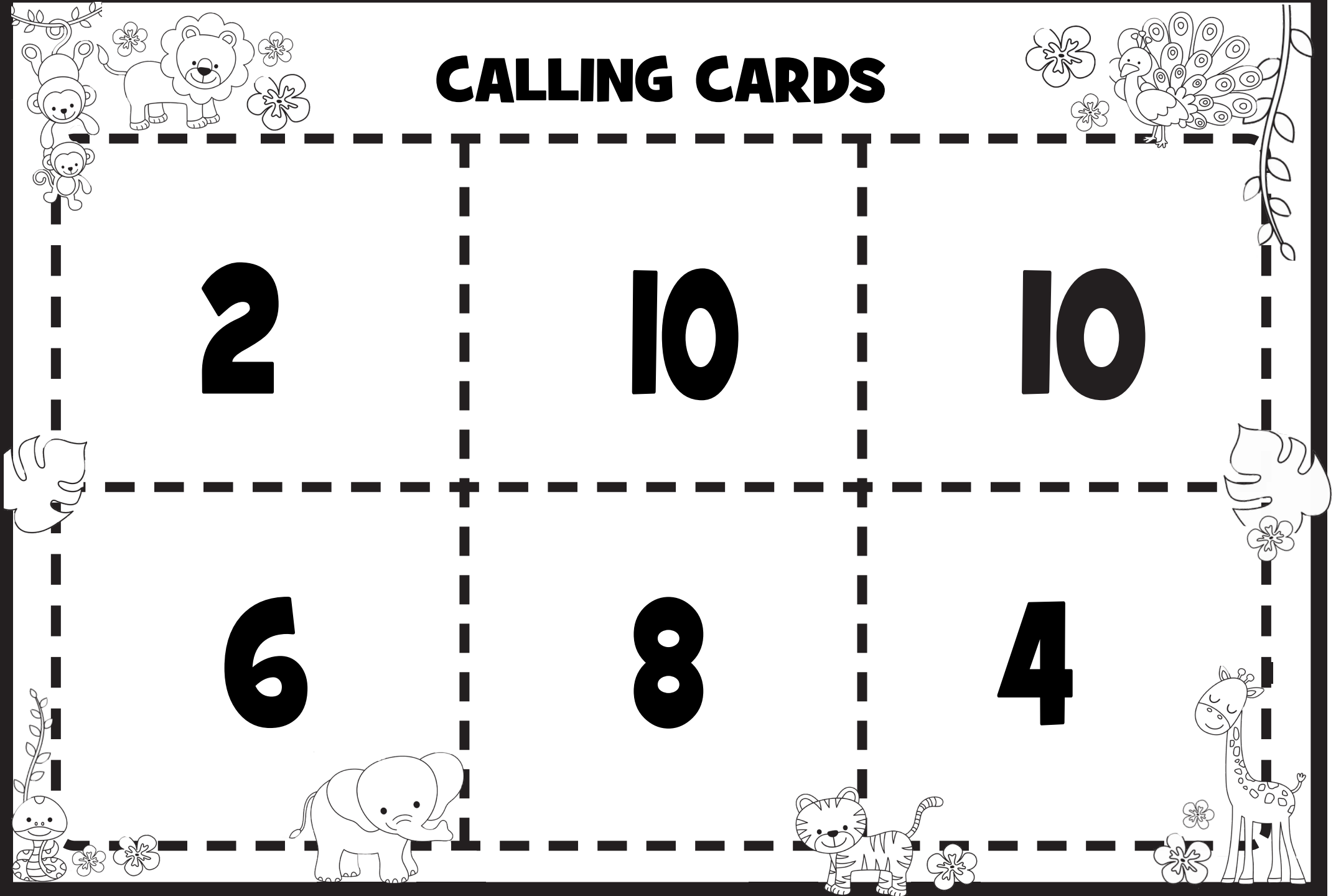
10

10

6

8

4



# LOWER DOUBLES BINGO

$2 + 2$

$3 + 3$

$4 + 4$

$5 + 5$

$2 + 2$

$1 + 1$

# CALLING CARDS

4

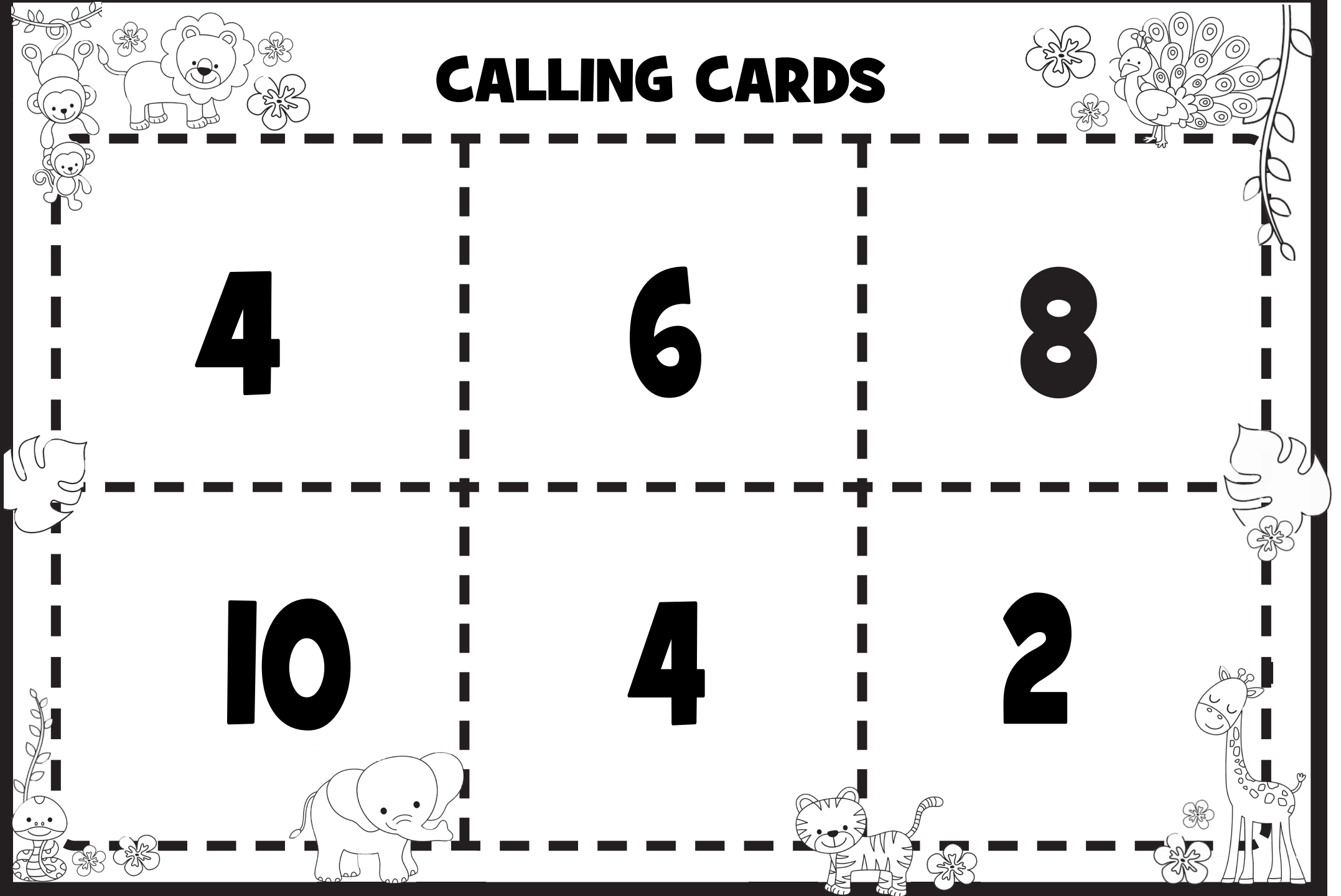
6

8

10

4

2



# LOWER DOUBLES BINGO

 $5+5$

$2+2$

$1+1$

$4+4$

$3+3$

$5+5$

# CALLING CARDS

10

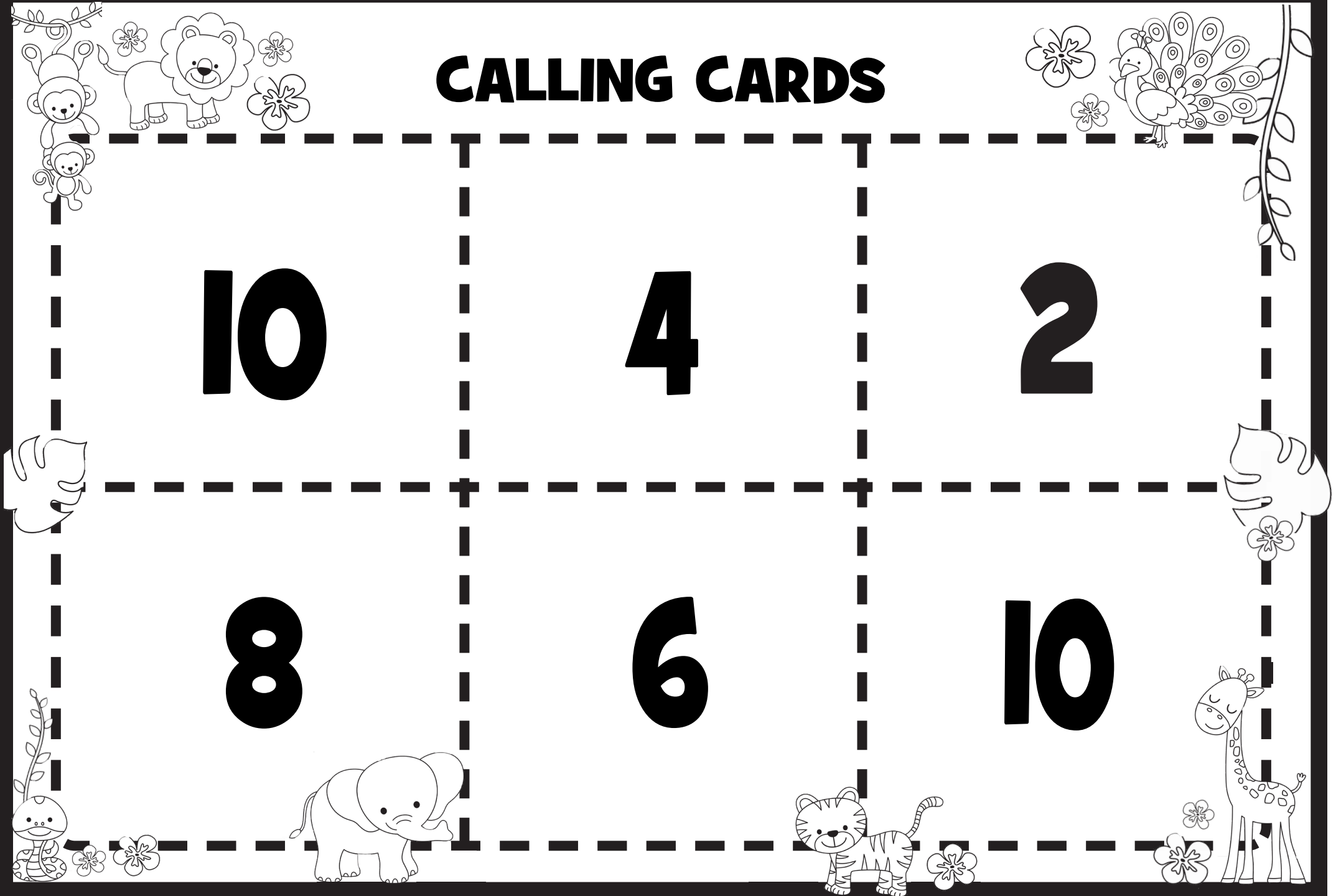
4

2

8

6

10





# LOWER DOUBLES BINGO

$1+1$

$5+5$

$3+3$

$4+4$

$1+1$

$2+2$

# CALLING CARDS

2

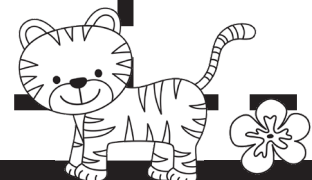
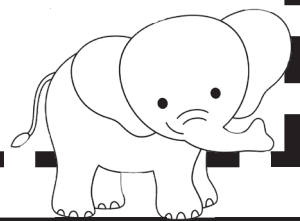
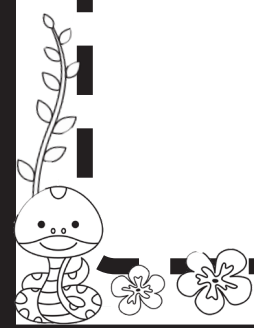
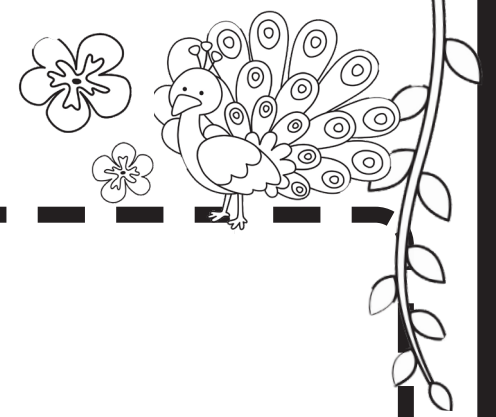
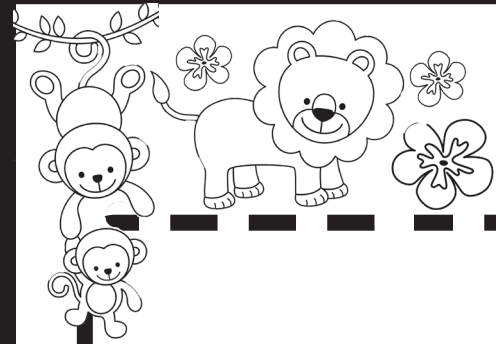
10

6

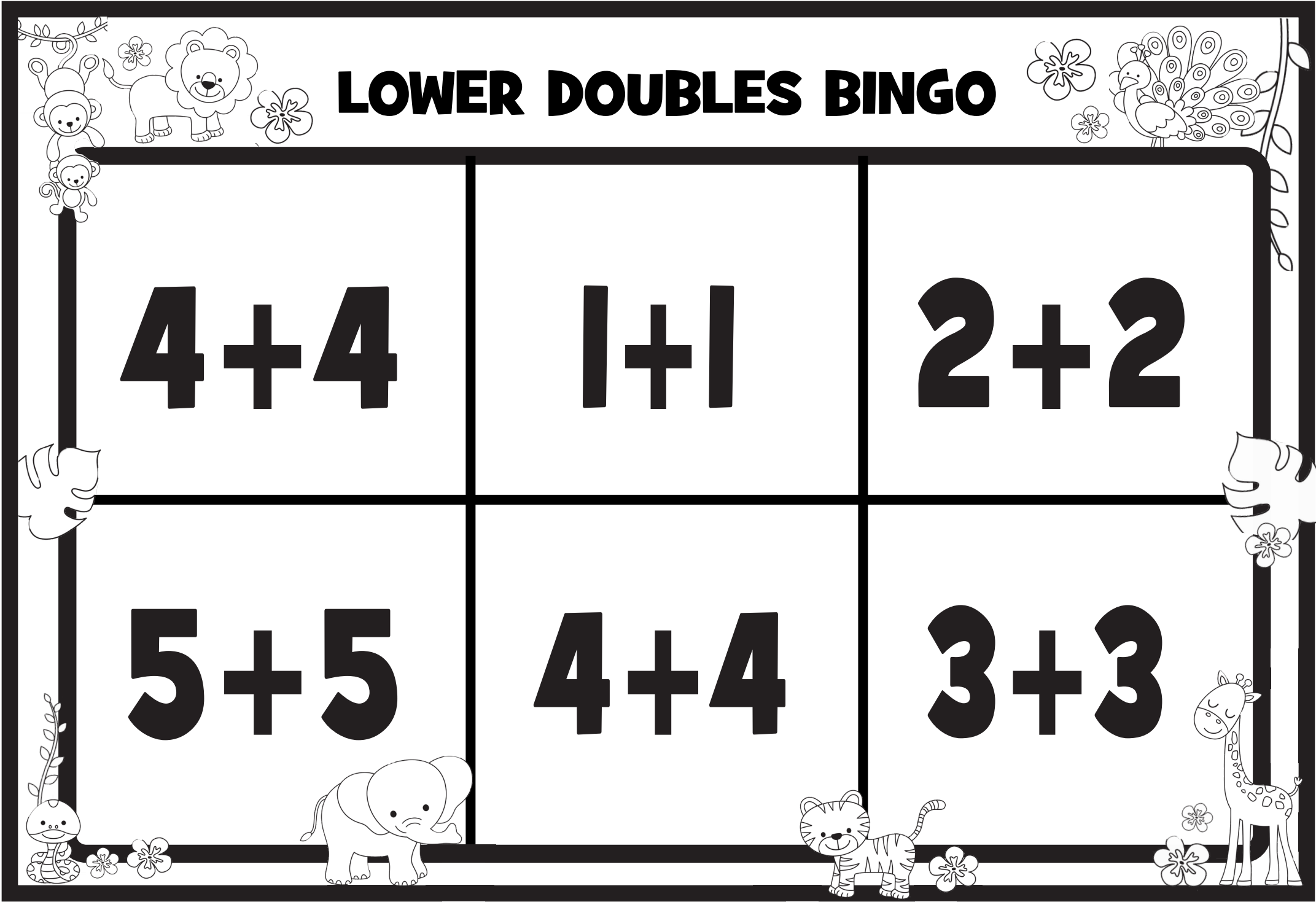
8

2

4



# LOWER DOUBLES BINGO

 $4+4$

$1+1$

$2+2$

$5+5$

$4+4$

$3+3$

# CALLING CARDS

8

2

4

10

8

6

